



GEL Battery

Gelled Silica technology for superior performance. Valve regulated, spill proof construction allows safe operation in any position. Approved for transport by air. D.O.T., I.A.T.A., F.A.A. and C.A.B. certified. U.L. recognized under file number MH 20567.

UPG No. D5871

UB22NF

Maintenance-Free



Specification

Nominal Voltage	12 volts		
Nominal Capacity	77° F (25° C)		
20-hr. (2.75A)	55.00 Ah		
10-hr. (5.12A)	51.15 Ah		
5-hr. (9.35A)	46.75 Ah		
1-hr. (33.00A)	33.00 Ah		
Approximate Weight	36.4 lbs (16.5 kgs)		
Internal Resistance (approx.)	10mΩ		
Shelf Life (% of normal capacity at 77° F (25° C))			
3 Months	6 Months	12 Months	
91%	82%	64%	
Temperature Dependency of Capacity	(20 hour rate)		
104° F	77° F	32° F	5° F
102%	100%	85%	65%

Charge Method (Constant Voltage)

Cycle Use (Repeating Use)

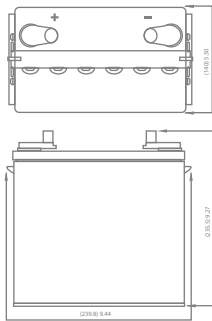
Initial Current 11.00 A or smaller

Control Voltage 14.2 - 14.4 V

Float Use

Control Voltage 13.2 - 13.4 V

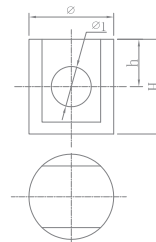
Physical Dimensions: in (mm)



L: 9.44in (239.8 mm)
W: 5.50in (140 mm)
TH: 9.27in (235.5 mm)

Tolerances are +/- 0.04 in. (+/- 1mm) and +/- 0.08 in. (+/- 2mm) for height dimensions. All data subject to change without notice.

Terminals



Z Series (Z Post Terminal) Offset Z

Dimension Type	∅	∅1	H	h
Z1	17.0	8.0	21.5	9.0

Constant Power Discharge Characteristics Unit:A (25°C, 77°F)

F.V/Time	5MIN	10MIN	15MIN	20MIN	30MIN	40MIN	50MIN	60MIN	90MIN
1.75V	280	206	167	143	110	89	75	66	46.2
1.70V	297	220	176	146	112	92	77	66.6	46.8
1.65V	313	233	184	152	115	94	79	68.2	48.4
1.60V	324	239	189	156	116	95	80	68.8	49.0

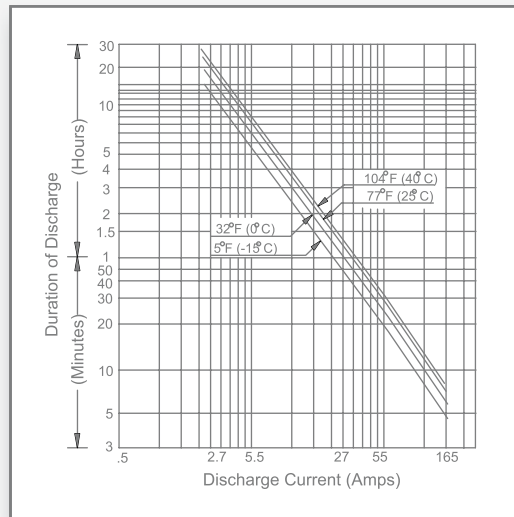
Constant Current Discharge Characteristics Unit:W (25°C, 77°F)

F.V/Time	5MIN	10MIN	30MIN	60MIN	2HR	3HR	4HR	5HR	6HR	7HR	8HR	10HR	20HR	24HR
1.90V	85	60	41.3	25.2	15.9	11.8	9.2	8.1	6.6	5.8	5.2	4.6	2.4	2.0
1.85V	111	74	50.6	29.5	17.3	12.5	9.9	8.6	7.1	6.2	5.6	4.8	2.5	2.0
1.80V	132	83	54.5	31.7	17.5	13.3	10.5	9.1	7.5	6.5	5.9	5.0	2.6	2.3
1.75V	150	89	57.8	33.0	18.7	13.8	10.8	9.4	7.7	6.8	6.1	5.1	2.8	2.3

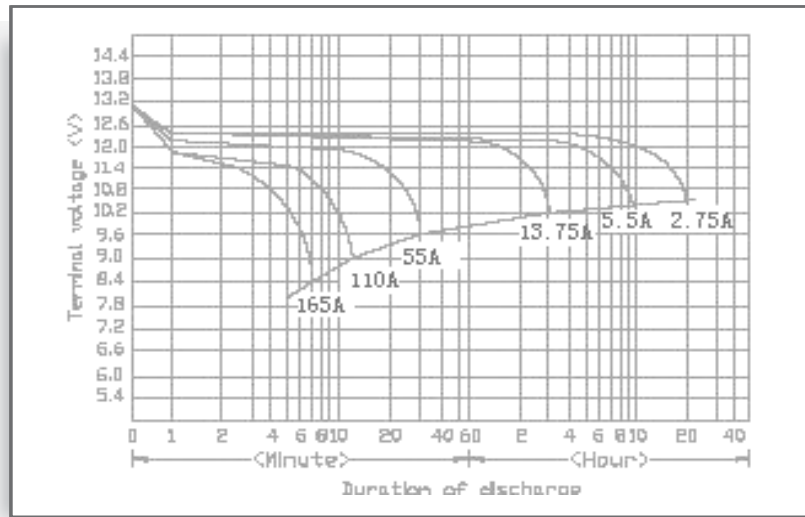
UB22NF

Maintenance-Free

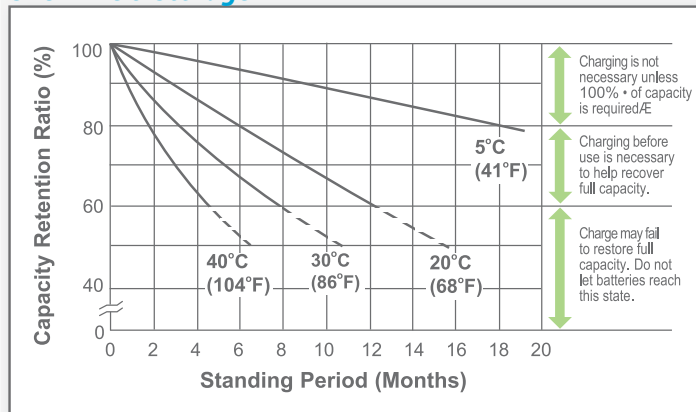
Discharge Time vs. Discharge Current



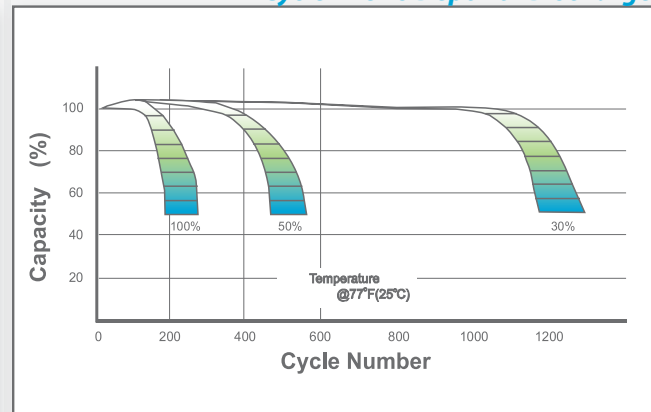
Discharge Characteristics



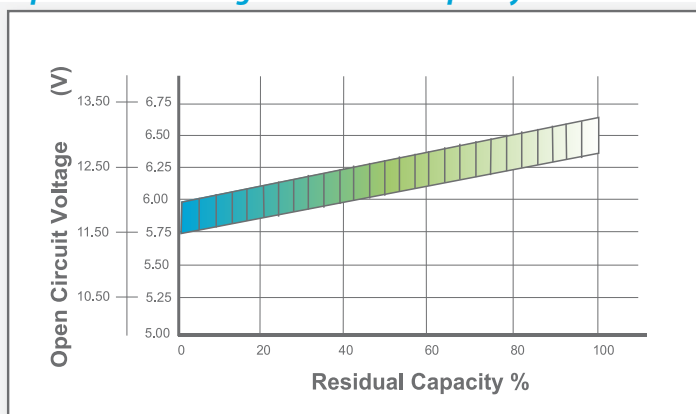
Shelf Life & Storage



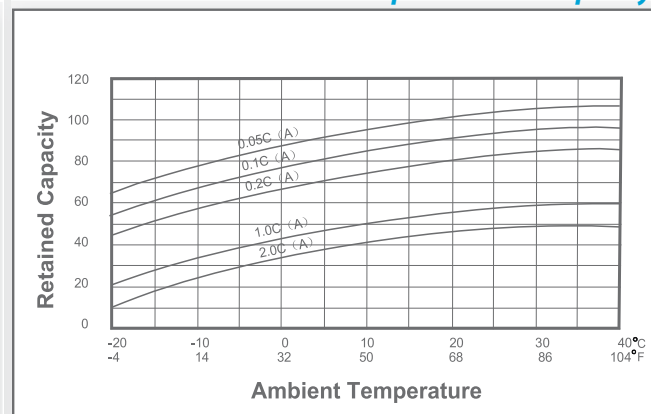
Cycle Life vs Depth of Discharge



Open Circuit Voltage vs Residual Capacity



Effect of Temperature on Capacity



Charge Current & Final Discharge Voltage

Application	Charge Voltage(V/Cell)			Max.Charge Current	Final Discharge Voltage V/Cell	Discharge Current(A)	1.75	1.70	1.60	1.30
	Temperature	Set Point	Allowable Range							
Cycle Use	25°C(77°F)	2.40	2.36-2.40	0.20C	Discharge	0.2C>(A)	0.2C<(A)<0.5C	0.5C<(A)<1.0C	(A)>1.0C	
Standby	25°C(77°F)	2.23	2.20-2.23							



Let UPG Power Your Life.

www.upgi.com